



SPECIAL EDITION VOLUME 56 • ISSUE 3 • OCTOBER 2024

# THE ORDER

The Military & Hospitaller Order of St. Lazarus of Jerusalem



GRAND PRIORAL COUNCIL 2024 • NEWPORT BEACH, CA

THE MILITARY & HOSPITALER ORDER OF ST. LAZARUS OF JERUSALEM

**SIEMPRE ADELANTE!**  
**ALWAYS FORWARD!**

**Grand Prioral Council:** Our Annual Meeting heads West

**Welcome to Newport Beach:** Introduction & Postulant Information

**Ukraine Special:** The Grand Prior goes to the front lines

The Official Newsletter of the Grand Priory of America



3



5



10



16

## INSIDE

- 3 The Grand Prior reflects on the year and welcomes you to Newport Beach.
- 4 The Commander of the West welcomes all to The 2024 Grand Prioral Council
- 5 The Schedule of Events gives you a snapshot of our event.
- 6 The Chaplain General offers his welcome to all.
- 7 The Almoner gives an update on the 2024 Pentecostal Appeal
- 8 A helpful guide to the terminology unique to The Order
- 9 The Commander of The West invites all to the Grand Prioral Council.
- 10 Meet some of our new postulants
- 12 Take a look at who has received an award or has been promoted
- 14 Read about the Donat Cross, offered for extraordinary gifts to the Order
- 16 The Grand Prior takes a journey to the front lines in Ukraine
- 18 Fruits of Service: Our Commandery at Work
- 20 Our Grand Hospitaller offers a snapshot of your Pentecostal Appeal at work
- 22 Join Rev. David Julianio tracing our roots on a pilgrimage to France



## THE ORDER

The Official Newsletter and Periodic Publication of the Grand Priory of America & the American Association of the Military and Hospitaller Order of St. Lazarus of Jerusalem is produced by the authority of the Grand Prior.

H.E. The Chevalier John F. Byrnes,  
GCLJ, GMLJ, GCMLJ  
*Grand Prior*

CDR George W. Zimmerman,  
USN (Ret), DSSM, CLJ, OMLJ, MBA  
*Editor*

The Rev. Christopher J. Decker, ChLJ, MMLJ  
*Associate Editor*

H.E. The Chevalier Jack Schroder, Jr.,  
GCLJ, GCMLJ, JD  
*Associate Editor Emeritus*

Contents of the publication are provided by Jurisdictional Commanders except where noted. Copyright 2023 by the Grand Priory of America. Reproduction in whole or in part without written consent is strictly prohibited.

For more information and in-depth coverage of activities throughout the year, you can visit The Grand Priory of America on the internet.

[www.st-lazarus.us](http://www.st-lazarus.us)

### ACKNOWLEDGEMENTS

Table of Contents: Image by edmondlafoto from Pixabay



## Our Mission Is Strong With You!

Dear Friends, I hope that all of you had an enjoyable summer and managed the heat, rain and storms as best as possible!

The 2024 Grand Prioral Council meeting is rapidly approaching, and will be held October 24-27 in Newport Beach, California. The Commandery of the West has lined up a spectacular event for all of us, and I encourage everyone to attend so you can see and hear firsthand about the good works of the GPA this past year. It's a great time to see old friends and meet new ones, and to welcome new postulants and congratulate those members being promoted and those awarded special recognition.

Our hospital in Tanzania is coming along very well under the very capable stewardship of Danielle Moni Zoobo, OLJ, and you will hear more about this at the GPC and in the newsletter.

As this year we have changed how we will allocate our Pentecostal Contributions, the leadership has been reaching out to those members who may be behind or delinquent to ensure that we can continue to support deserving charitable programs, both locally and internationally. It takes all of us to join together consistently and annually to ensure that we can carry out our mission of helping those in need! While our dues cover the operating costs of the GPA and the international assessment per active member, one third goes back to your local sub jurisdiction to support your local charitable programs. Delinquent dues not only can impact the ability of the GPA to carry out its duties appropriately, but it also reduces the amount available for your local charitable programs, and after all, that's why we joined the Order of St. Lazarus!

Our sub-jurisdictions have been busy this past year, and I'm very proud of our leadership and our members for doing so much to help those less fortunate in their local areas. While our process for this will change this year, our mission hasn't, and we will continue to do our best to help those in need.

We lost a good friend this past summer, Chevalier John Tempone, and many of us gathered in Tampa, Florida on July 30th to pay our respects to the memory of John and visit with his wife Charla. John and his Southeast Commandery team did an outstanding job in running our GPC in

Tampa last October, and in hindsight it provided all of us with lasting and happy images of John at work and play!

I returned from Ukraine on September 15th after spending almost 2 weeks there on the GPA's second medical mission trip since the war started in February 2022. This time we had two St. Lazarus teams on this trip, with one led by Dirk Augustin (Germany) and Paul Richards (Canada) heading into central Ukraine and my team went to the southern front lines. The German/Canadian team delivered medical equipment to Cherkasy, a town near Kiev, and IFAKs to the volunteer Hospitaller Brigade in Kiev. Our team delivered and trained a military unit on the front lines on the use of this life-saving equipment, and it was without a doubt one of the most rewarding things I have ever done in my life.

Anna and I look forward to seeing all of you in Newport Beach, and as always, thank you for your service and for what you do to help so many in need around the world! ✚



H.E. The Chevalier John F. Byrnes,  
GCLJ, GMLJ, GCMLJ

Grand Prior,  
Grand Priory of America



GRAND PRIORAL COUNCIL 2024 · NEWPORT BEACH, CA



The Very Reverend Marcos J. Gonzalez, ECLJ, CMLJ, SMLJ, MDiv, MS

Commander,  
Commandery of The West

THE MILITARY & HOSPITALER ORDER OF ST. LAZARUS OF JERUSALEM

# SIEMPRE ADELANTE! ALWAYS FORWARD!

**D**ear Confreres and Consœurs,  
On behalf of the Commandery of the West, I am delighted to welcome you to our 2024 Grand Prioral Council in Newport Beach, California! Our GPC 2024 Planning Committee has been hard at work to ensure that we have a most enjoyable and spiritually fruitful annual meeting. Since we will be in California amidst the great Missions which brought the gospel to this part of the country, our theme will be “Siempre Adelante! – Always Forward!” This was the motto of the great apostle of California, Saint Junipero Serra. It is also a fitting motto for us as the Order of Saint Lazarus as we continue our almost thousand year tradition of chivalry and outreach to the sick and needy of our world.

The site of our meeting in 2024 is the fabulous [VEA Newport Beach](#), a Marriott Resort & Spa. This is a newly renovated resort property overlooking the Pacific ocean in a magnificent setting. I think you will be very pleased with the beautiful rooms, amenities and facilities of the resort. The Newport Beach location offers many advantages to our members:

- Very close to John Wayne Airport (SNA)
- Also accessible to Los Angeles International Airport (LAX)
- Disneyland is nearby!
- Spa, beach, hiking trails, golf, harbor cruises and so much more!

For our Friday evening Vigil, we will be using [Queen of Angels Catholic Church](#) and for the Saturday Investiture, we will use [Christ Church by the Sea United Methodist Church](#). Both of these are near our hotel. At the Vigil, we will be treated to the singing of the Norbertine Fathers of

[Saint Michael's Abbey](#) and will have the privilege of having the relics of Saint Damien de Veuster and Saint Marianne Cope (brought from Hawai'i for the occasion) present during our prayer service.

Right across the street from our hotel is the huge Fashion Island which includes many exclusive shops as well as excellent restaurants for our Commandery dinners on Thursday evening.

Our Friday evening dinner will be in a beautiful outdoor setting overlooking the Pacific and bluffs and cooled by ocean breezes. Our Hawai'i Cadre will be arranging a Hawai'ian/Polynesian evening of delicious dishes and beautiful entertainment. Our formal Saturday evening gala dinner will be in a resplendent ballroom with a magnificent band for dancing the night away.

Our official Thursday morning excursion (optional) will be to the very interesting [Richard Nixon Presidential Library and Museum](#). Other tours can also be arranged to the [San Juan Capistrano Mission](#) or [St. Michael's Abbey](#). Both are well worth visiting.!

Our 2024 Grand Prioral Council promises to be a wonderful occasion to renew our bonds of friendship, chivalry and Christian service and have a fabulous time doing it! I'm looking forward to visiting with you! ✨

# Schedule of Events

## THURSDAY, OCTOBER 24, 2024

9:00am-4:30pm:	Registration, Information and Custos Desk (closed for lunch) – Lobby Registration Desk
9:30am-3:00pm:	Optional tour – Richard Nixon Presidential Library (ticketed, box lunch provided)
12:00 Noon:	Chaplains lunch, hotel restaurant
4:00pm-6:00pm:	Meeting of Communications Committee (coat/tie) (Committee members)
4:00pm-6:00pm:	Postulant Orientation (required for Postulants/business casual)
6:15pm-7:00 pm:	Grand Prior's Welcome Reception (business casual)
7:00pm:	Commandery Dinners
10:00pm:	Compline (optional)

## FRIDAY, OCTOBER 25, 2024

7:30am-8:00am:	Catholic Holy Mass
7:30am-8:00am:	Ecumenical Eucharist
8:30am-2:30pm:	Registration, Information and Custos Desk (closed for lunch and for Vigil) Registration Desk
8:30am-11:00am	Meeting of the Almoners and Hospitallers (coat/tie)
8:30am-11:00am	Meeting of the Commanders (coat/tie)
8:30am-11:00am	Meeting of the Chaplains
11:30pm-1:00 pm	Grand Prioral Luncheon (coat/tie)
1:30pm-2:00 pm	Postulant Orientation (Postulants & Marshalls Required)
2:00pm -2:45pm	Meeting of the Marshalls
1:30pm-3:00 pm	Meeting of AASL Board of Directors (coat/tie)
1:30pm-3:00pm	Relics of St. Damien de Vuester and St. Marianne Cope Veneration <i>Our Lady Queen of Angels Catholic Church</i> 2046 Mar Vista Dr., Newport Beach, CA 92660
2:45pm-3:15pm	Bus loads for transport to Vigil (Service dress or dark suit/cocktail dress with mantles)
3:30pm-4:30pm	Vigil Service (required for Postulants and Marshalls) <i>Our Lady Queen of Angels Catholic Church</i> 2046 Mar Vista Dr., Newport Beach, CA 92660
4:30pm-5:00 pm	Bus returns to Hotel for Reception & Dinner
6:00pm-9:30pm	Reception and Dinner (Aloha Attire)
10:00pm	Compline (optional)

## SATURDAY, OCTOBER 26, 2024

8:00am-8:30am	Catholic Holy Mass
8:00am-8:30am	Ecumenical Eucharist Service
9:00am-10:00	GPC Symposium – Ecumenical Workshop
9:00am-12:30pm	Registration, Information and Custos Desk
10:15am-12:15pm	AASL/GPA Business Meeting (All Members) (coat/tie)
Lunch on own	
2:00pm	Postulants, Marshalls, Awardees, and Promotees depart for Investiture (white tie or dress uniform, dark formal gown/evening dress, decorations and mantles)
2:15pm	Buses depart for Investiture (white tie or dress uniform, dark formal gown/evening dress, decorations and mantles)
3:00pm-4:45pm	Investiture <i>Christ by the Sea Methodist Church</i> 1400 W. Balboa Blvd., Newport Beach, CA 92661
5:00pm	Bus returns to Hotel for Reception & Gala
6:00pm-6:45pm	Formal Reception (white tie or dress uniform, dark formal gown/evening dress, decorations and mantles)
7:00pm-10:00pm	Formal Dinner and Gala Ball (white tie or dress uniform, dark formal gown/evening dress, decorations and mantles)

## SUNDAY, OCTOBER 27, 2024

9:30am-10:30am	Catholic Mass
11:00am	Checkout



## A Welcome to All!



H.E. The Rev. MG Razz Waff,  
USA (Ret), DSM, BCC, GCLJ, OMLJ,  
DMin

Chaplain General,  
Grand Priory of America

**A**s you read this we are a few short weeks from gathering in Newport Beach, California for our annual Grand Priorial Council (GPC). There will be new members inducted, awards and promotions recognizing the outstanding work of our current members and gathering to renew friendships, and in the midst of all of this, focusing on our mission both as the Grand Priory of America (GPA) locally and the larger international focus on the eradication of Hansen's Disease.

For returning members receiving awards and promotions, congratulations for your contributions to your commandery and to the GPA! This is certainly a time for you to reflect on what you have done, and to also renew your efforts when you return home to build on the good works already begun and recognized by your peers. Additionally, you have a special responsibility if you will be at the GPC: To welcome the postulants who are being invested in the Order. I can remember my investiture in Chicago in 2000, and how welcoming the current members were- especially in the Commandery of the Midwest- and what a sense of inclusion I had. I would urge you to welcome our new members with the same sense of welcome, especially if they are in your commandery. Since we restructured the commanderies this is even more important as they have become larger geographically

For those of you who are postulants being inducted into the Order in Newport Beach, this will be your first experience outside your local commandery of experiencing the Order at the GPA level. Feel free to ask the obvious questions (that others probably have as well) and reach out to current members if you have any questions at all. The two most critical meetings you will have will be on Thursday afternoon when the lay leaders of GPA will provide you an overview of GPA, and then the chaplains will provide an overview of spiritual and religious aspects of the Order.

And now let us pray that as we gather together we do so asking God's blessing at this time.

**LET US PRAY:** Almighty and everliving God, source of all wisdom and understanding, be present with those who take counsel in this Grand Priorial Council of the Grand Priory of America for the renewal and mission of the Order, and grant us to perceive what is right, and the grace to accomplish it; through Jesus Christ our Lord.

Amen. ✙

## The Race is On: A Penecostal Appeal Update



H.E. Dame Mary Ann Straub,  
GCLJ, DMLJ, SCrLJ, DC2ndLJ, MEd

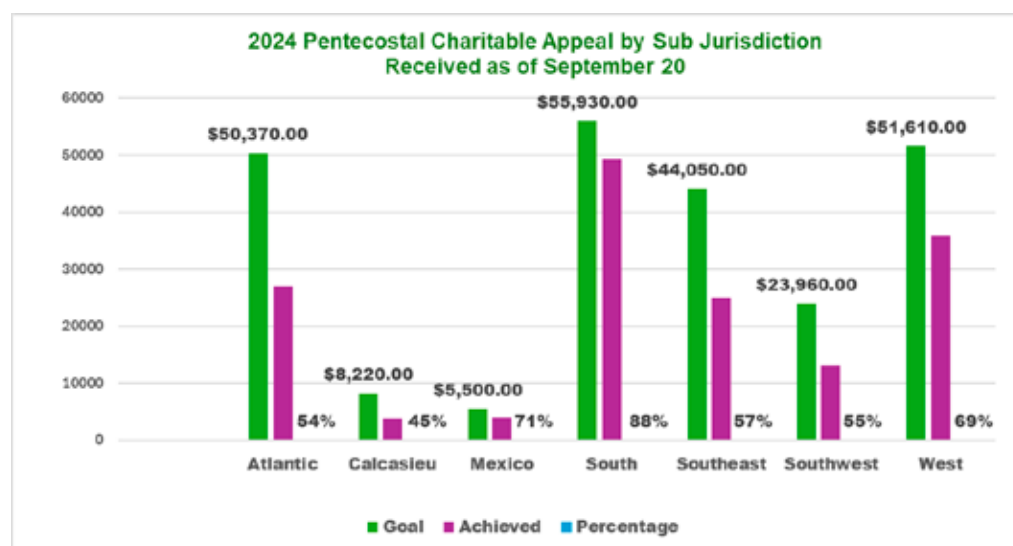
Grand Prioral Almoner,  
Grand Priory of America

*Charity is the essence  
of our chivalric order,  
and each of us is  
obliged to provide our  
support to the best of  
our ability.*

Whose lives will we make better in the coming months? Will it be a Hansen's disease patient who is trying to save a limb, a child at the Infant Welfare Center whose life has been disrupted by war, a person in your city who needs food, a woman in Tanzania who requires fistula surgery, a veteran with PTSD? The mission of our Order is to relieve human suffering. One way we fulfill that responsibility is through the annual Pentecostal Charitable Appeal whereby each member joins in the self-funding of our hospitaller charitable ministries.

This year the sky is truly the limit. With the newly established hospitaller funding process in place, one half of each sub jurisdiction's contributions will revert to the sub jurisdiction in early 2025 to support local charitable ministries. (Members are welcome to propose charities.) The other half will support our traditional national and international ministries, such as the Mexican Clinics, Infant Welfare Center, Rising Star Outreach, St. Lazarus Hospital in Tanzania.

Each sub jurisdiction has a monetary goal based on each member donating at least twice dues. Since all donations must be received no later than December 31, the race is on to reach or, even better, to exceed each sub-jurisdictional goal.



If you have not yet made your donation, login at [www.st-lazarus.us](http://www.st-lazarus.us) and go to Online Payments → Annual Pentecostal Appeal Donation → Donate.

For those who wish to donate by check, please mail your contribution to The American Association of the Order of Saint Lazarus (AASL), c/o Dame Jennifer St. Victor-dePinho, DLJ, 38 Peaceable Street, Ridgefield, CT 06877. ✧



## WHAT DO ALL THESE MEDIEVAL WORDS REALLY MEAN?

# LAZARUS, SPEAK!



H.E. The Chevalier Harold R. "Pent" Penton, Jr.,  
GCLJ, KMLJ, SCR LJ, DC3rd LJ, PhD

Chancellor,  
Grand Priory of America

First, let me welcome our Postulants and members to the Order of St. Lazarus Grand Priory of America 2024 Grand Prioral Council. For our Postulants, I trust you will find being a member of our Order to be as rewarding in terms of friendships and making a difference in the world as I have.

However, when I joined the Order as a Postulant in 2006, I was immediately confronted by what seemed to be a foreign language written and spoken by the Order's members. Terms such as Bailiwick, Priory, Crucifer, Inquisitor, Almoner, Hospitaller, Confreres and Consoeurs, Atavis et Armis were as foreign to me as, well, Latin, which it turns out many are. So, in an effort to help our Postulants (as well as possibly some longer-term members) wade through the St. Lazarus Medieval language, here is a translation (or at least close to it) into what these weird words mean.

This is by no means an exhaustive list of all the Medieval words and terms you may encounter as a member of the Order, but these are the most common you will hear or see written.

For you Medieval history buffs, a couple of books in which the Order of St. Lazarus is referenced are *The Monks of War* by Desmond Seward and *Defending the City of God* by Sharan Newman. And if you would like a glimpse of what life was like in one of the last leprosaria in the United States in the late 20th Century, read *In the Sanctuary of Outcasts* by Neil White.

Again, let me welcome our new Postulants. I look forward to meeting each of you in the coming three days.

### ST. LAZARUS SPEAK

### THE COMMON TONGUE

**Aide-du-Camp** Special assistant to the Grand Prior

**Almoner** Oversees charitable donations

**American Association of the Order of St. Lazarus (AASL)** 501(c)(3) charitable arm of the Grand Priory of America

**Archivist** Maintains Order's historical records

**"Atavis et Armis"** "Ancestors and Arms"  
(the motto of the Order)

**Bailiff** Executive Vice President (reports to Grand Prior and overseas Almoner, Hospitaller, Inquisitor, Receiver, Secretary, Marshal, and Vice Chancellor(s) of the AASL)

**Bailiwick** A regional/country jurisdiction of the Order (often used in Europe such as the Bailiwick of Switzerland)

**Banner Bearer** Carries the Order's flag at official ceremonies

**Cadre** Geographical region of 3-15 Commandery members (e.g., Cadre of Hawaii, part of the Commandery of the West)

**Chancellor** Vice President of Operations (reports to Bailiff and overseas administrative, legal, planning, and Commandery related activities)

**Chaplain** Ordained clergy member of the Order

**Chaplain General** Oversees all clergy members of the Grand Priory of America

**Commandery** Geographical region of 50-75 members (e.g., Commandery of the Southeast)

**Confreres and Consoeurs** Salutation in correspondence (translates as Brothers and Sisters)

**Crucifer** Bearer of the Processional Cross

**Custos** Provides Order's insignia to members

**Delegation** Geographical region of 15-25 members (e.g., Delegation of Mexico)

**Grand Commandery** Geographical region of 75+ members

**Grand Master** Chief Executive Officer (by tradition, a Borbon family member)



## ST. LAZARUS SPEAK

## THE COMMON TONGUE

<b>Grand Prior</b>	President of a national organization of the Order (reports to the Grand Master)
<b>Grand Priory</b>	A national jurisdiction of the Order
<b>Grand Priory of America</b>	National jurisdiction of the Order composed of the United States and Mexico (often referred to as the GPA)
<b>Grand Prioral Council</b>	Annual meeting of the Grand Priory of America
<b>Grand (<i>whomever</i>)</b>	A senior officer of the Grand Priory of America (e.g., Grand Prioral Almoner)
<b>Herald</b>	Responsible for the maintenance of the Grand Prioral Roll of Arms and matters dealing with armorial bearings and proofs of nobility.
<b>Hospitaller</b>	Responsible for the identification and implementation of charitable activities
<b>Inquisitor</b>	Responsible for verification, and recommendation/rejection of applications for membership in the Order.
<b>Lieutenancy</b>	Geographical region of 25-49 members
<b>Marshal</b>	Responsible for the organization of ceremonial functions
<b>Postulant</b>	A new member that has not yet been invested in a GPC Investiture Service
<b>Receiver</b>	Chief Financial Officer (responsible for financial matters)
<b>Scrivener</b>	Prepares brevets reflecting rank and diplomas documenting merit awards
<b>Secretary</b>	Issues minutes of GPA meetings
<b>Stationer</b>	Distributes stationery and office supplies
<b>Sub-jurisdiction</b>	Another term for Commandery, Lieutenancy or Delegation
<b>Sword Bearer</b>	Carries the Order's Sword at official events
<b>Vice Chancellors</b>	Grand Priory of America senior officers reporting to either the Bailiff or Chancellor
<b>Webmaster</b>	IT and Communications Director



# I SHALL SERVE



**Santiago Portilla Aguilar**  
Roman Catholic  
CEO - Insurance Broker  
Benito Juarez, Mexico  
Mexico



**George Anthony Harris**  
Roman Catholic  
Retired Insurance Executive  
Los Angeles, CA  
West



**Brian Thomas Kaai Apo**  
Roman Catholic  
Tour Bus Driver  
Honolulu, HI  
West



**Alberto Pontonio**  
Roman Catholic  
Investment Banking  
Key Biscayne, FL  
Southeast



**Kyle Shaun Bunker**  
Roman Catholic  
US Army (Ret)  
Meridian, ID  
West



**Samuel P. Rottman**  
Roman Catholic  
Fundraising  
New Orleans, LA  
South



**Cathy Espenan**  
Roman Catholic  
Professional Realtor  
New Orleans, LA  
South



**Ketan Seth**  
Greek Catholic  
Entrepreneur -  
Financial Tech Services,  
Private Equity  
Newport Beach, CA  
West



**Eric Victor Figueroa**  
Roman Catholic  
Firefighter (Ret)  
Boynton Beach, FL  
Southeast



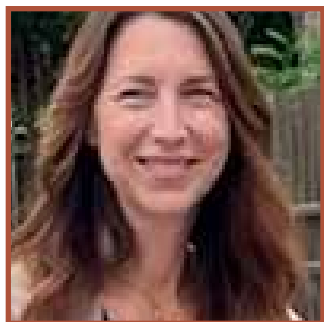
# A Warm Welcome to our New Postulants



**Anda Stefanescu**  
Christian Orthodox  
Entrepreneur  
Newport Beach, CA  
West



**Pamela Leigh Stephany**  
Presbyterian  
International Banking (Ret)  
Fort Lauderdale, FL  
Southeast



**Nina Elizabeth Vultaggio**  
Roman Catholic  
Sales & Marketing  
Laguna Hills, CA  
West



# Promotions & Awards

Members are promoted based upon the testimony of their commander. They may also receive awards for meritorious service to The Order.

---

In accordance with the Constitution of the Order, and after consultation with the Advisory Council, the Grand Prior is pleased to approve the following **promotions**:

For their service and contribution to the **Grand Commandery of the South**:

**Nadja Rose Salerno-Sonnenberg, OLJ, DMUSIC (Hon) – to the Rank of Commander (CLJ)**  
**Gayle Marie Benson, OLJ – to the Rank of Commander (CLJ)**

For their service and contribution to the **Commandery of the Southwest**:

**LTC Daniel Walter Beauchamp, USA, CLJ, DO – to the Rank of Knight of Grace (KLJ)**  
**The Reverend Kevin Paul Fausz, AChLJ – to the Rank of Chaplain (ChLJ)**

For their service and contribution to the **Commandery of the West**:

**The Most Reverend Clarence Richard Silva, SchLJ, MMLJ – to the Rank of Ecclesiastical Knight Commander (ECLJ)**  
**The Reverend Lane Kalani Akiona, ss.cc, ChLJ, OMLJ to the Rank of Senior Chaplain (SchLJ)**  
**Christopher Ted Apodaca, CLJ – to the Rank of Knight of Grace (KLJ)**  
**David Senna Raese, OLJ – to the Rank of Commander (CLJ)**  
**The Reverend Dario Luca Rinaldi, OSB, AChLJ – to the Rank of Chaplain (ChLJ)**

For their service and contribution to the **Commandery of the Southeast**:

**Lisa Renee Kory, CLJ, MMLJ – to the Rank of Dame of Grace (DLJ)**  
**Jorge Alberto Valencia, CLJ – to the Rank of Knight of Grace (KLJ)**  
**Jack Donald Gilliam, OLJ – to the Rank of Commander (CLJ)**  
**Josanne Elizabeth Freer Gilliam, OLJ – to the Rank of Commander (CLJ)**

For their service and contribution to the **Commandery of the Atlantic**:

**Patricia de los Angeles Castillo Milner, CLJ, MMLJ, PA – to the Rank of Dame of Grace (DLJ)**  
**Michael David Witter, CLJ – to the Rank of Knight of Grace (KLJ)**

---

His Excellency, the Grand Master, upon the nomination of the Grand Prior, has graciously approved the following awards:

**Dame Mary Patricia Ettari, DCLJ, DMLJ, PA – the Companionate of Merit in the rank of Grand Cross (GCMLJ)**  
**H.E. The Chevalier Jack Spalding Schroder, Jr., GCLJ, GCMLJ, JD – the Gold Cross of Merit (GCrLJ)**  
**H.E. Dame Mary Ann Pfeifer Straub, GCLJ, DMLJ – the Gold Medal of Merit (GMLJ)**  
**H.E. COL The Chevalier John J. Halloran, Jr., USA (Ret) GCLJ, KMLJ – the Gold Medal of Merit (GMLJ)**



In accordance with the Constitution of the Order, and after consultation with the Advisory Council, the Grand Prior is pleased to approve the following **awards**:

For their service and contribution to the **Grand Commandery of the South**:

H.E. Dame Mary Ann Pfeifer Straub, GCLJ, DMLJ – the **20 year Meritorious Service Award (20yr MSD)**  
The Most Reverend Gregory Michael Aymond, ECLJ – the **Companionate of Merit in the Rank of Knight (KMLJ)**  
The Reverend Christopher Joseph Decker, ChLJ, MMLJ – the **Bronze Medal of Merit (BMLJ)**  
Jan Merrington – the **Bronze Medal of Merit (BMLJ)**

For his service and contributions to the **Commandery of the Southwest**:

Chevalier Donald Lee Ross, CAPT, USPHS, KCLJ, OMLJ, DMD – the **Silver Cross of Merit (SCrLJ)**

For their service and contribution to the **Commandery of the West**:

The Very Reverend Marcos J. Gonzalez, ECLJ, CMLJ – the **Companionate of Merit in the Rank of Knight (KMLJ)**  
Chevalier Thomas Dallas Laing, Jr., KCLJ, OMLJ – the **Companionate of Merit in the Rank of Knight (KMLJ)**  
The Reverend Lane Kalani Akiona, ss.cc, ChLJ, OMLJ – the **Companionate of Merit in the Rank of Commander (CMLJ)**  
The Reverend Fr. William Matekihelotu Tulua-Alvarez, ChLJ, OMLJ – the **Companionate of Merit in the Rank of Commander (CMLJ)**  
Chevalier Steven Douglas Brock, KCLJ, OMLJ – the **Companionate of Merit in the Rank of Commander (CMLJ)**  
Allison Heather Hensleit, CLJ – the **Companionate of Merit in the Rank of Officer (OMLJ)**  
June Stephanie Segundo, CLJ, MMLJ, RN – the **Companionate of Merit in the Rank of Officer (OMLJ)**  
The Most Reverend Clarence Richard Silva, SchLJ, MMLJ – the **Companionate of Merit in the Rank of Officer (OMLJ)**  
The Reverend Dario Luca Rinaldi, OSB, AchLJ – the **Companionate of Merit in the Rank of Member (MMLJ)**

For their service and contribution to the **Commandery of the Southeast**:

The Reverend Herbert Frederick Gough, Jr., ECLJ, CMLJ – the **Companionate of Merit in the Rank of Knight (KMLJ)**  
Chevalier John Witherspoon Wallace, Jr., KLJ, CMLJ – the **Companionate of Merit in the Rank of Knight (KMLJ)**  
Charla Tempone – the **Companionate of Merit in the Rank of Member (MMLJ)**  
Richard Preston Tonkinson, CLJ – the **Companionate of Merit in the Rank of Member (MMLJ)**

For their service and contribution to the **Commandery of the Atlantic**:

Charles Douglas Harvey, CLJ – the **Silver Medal of Merit (SMLJ)**  
H.E. The Reverend William D. Razz Waff, MG, USA (Ret), GCLJ, OMLJ, DMin – the **Silver Medal of Merit (SMLJ)**  
Chevalier Christopher Andrew St. Victor-de Pinho, LTC, NYNG, KLJ – the **Companionate of Merit in the Rank of Commander (CMLJ)**  
Chevalier Michael R. Milner, RADM, USPHS (Ret), KCLJ, OMLJ – the **Bronze Cross of Merit (BCrLJ)**  
Danielle Moni Zoobo, OLJ – the **Companionate of Merit in the Rank of Officer (OMLJ)**  
CPT Jeffrey William Rogers, USA (Ret), CLJ – the **Companionate of Merit in the Rank of Officer (OMLJ)**  
Dame Jennifer Sinclair St. Victor-de Pinho, DLJ – the **Companionate of Merit in the Rank of Officer (OMLJ)**

For their service and contribution to the **Delegation of México**:

The Very Reverend José de Jesús Aguilar Valdéz, SchLJ, CMLJ – the **20 year Meritorious Service Medal (20yr MSD)**  
Pedro Casillas Capetillo, CLJ, MMLJ – the **Bronze Medal of Merit (BMLJ)**  
Chevalier Guillermo D. Salas Vargas, KCLJ, CMLJ – the **Bronze Medal of Merit (BMLJ)**

For their contributions to the **American Association of the Order of St. Lazarus**:

Joshua James Joseph Mitchell Barger, OLJ – the **Donat Cross 3rd Class (DC3rdLJ)**  
Josanne Elizabeth Freer Gilliam, OLJ – the **Donat Cross 3rd Class (DC3rdLJ)**  
Dame Susan Tennant Kartzke, DLJ, CMLJ – the **Donat Cross 3rd Class (DC3rdLJ)**  
H.E. The Reverend William D. Razz Waff, MG, USA (Ret), GCLJ, OMLJ, DMin – the **Donat Cross 3rd Class (DC3rdLJ)**



## SPECIAL AWARDS OF MERIT

### A look at The Donat Cross: Twenty Years of Exceptional Generosity

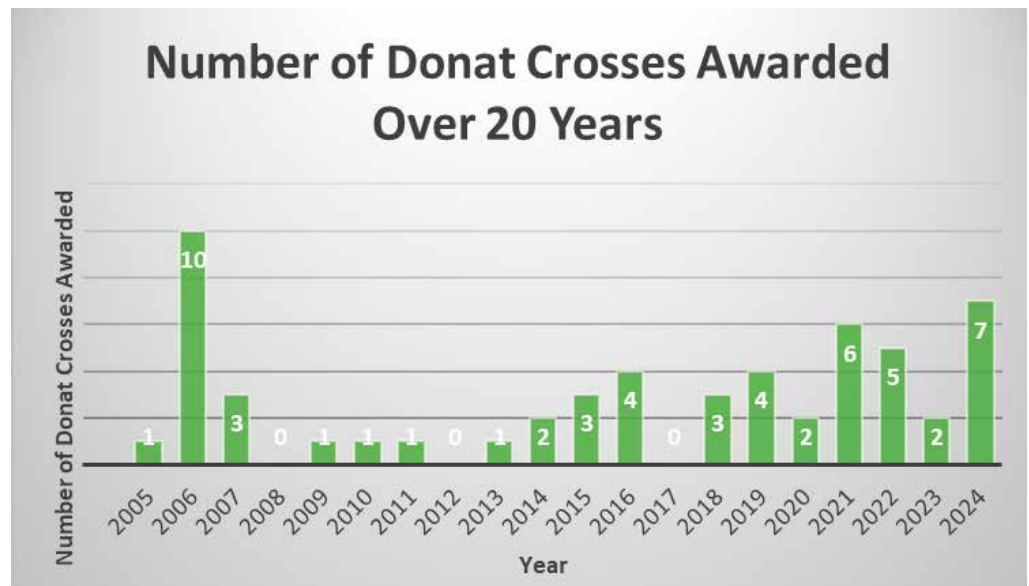
**H.E. Dame Mary Ann Straub,**  
**GCLJ, DMLJ, SCLJ, DC2ndLJ, MEd**  
Grand Prioral Almoner, Grand Priory of America

*"Most say it is  
gratitude that prompts  
the donation..."*

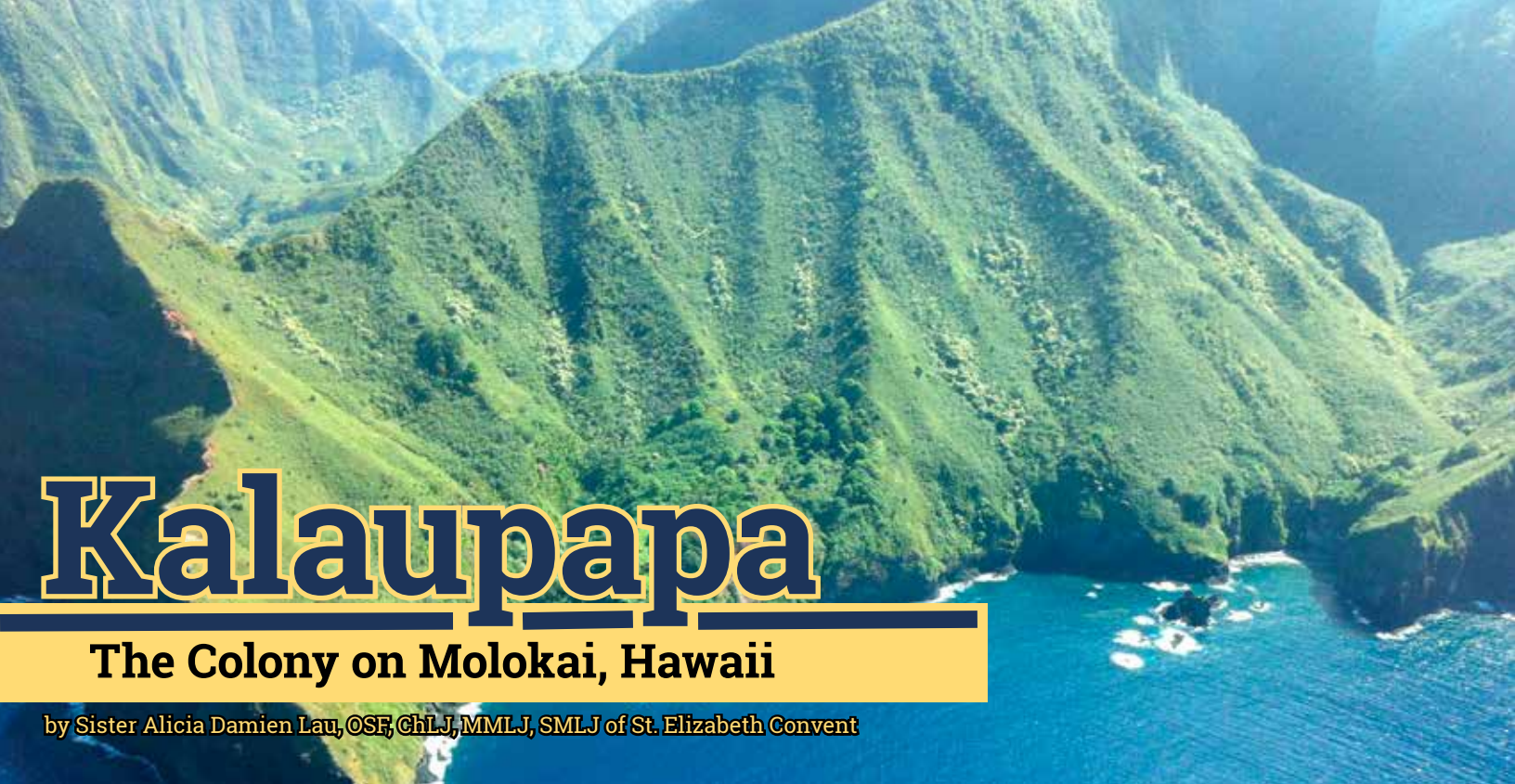
**W**hat is the Donat Cross? A special merit award, the Donat Cross, is granted for exceptionally generous charitable donations to The American Association of the Order of Saint Lazarus, Inc. A member or non-member making donations totaling \$5,000 in a three-year period is granted the Donat Cross Third Class (DC3rdLJ). A member or non-member giving donations totaling \$10,000 within a three-year period qualifies for the Donat Cross Second Class (DC2ndLJ). A member or non-member making donations totaling \$15,000 within a three-year period qualifies for the Donat Cross First Class (DC1stLJ). These awards are not cumulative. A member must declare which award is being sought by notifying the respective Commander and the Vice Chancellors for the AASL.

**Why does an individual choose to make a donation worthy of a Donat Cross?**

Most say it is gratitude that prompts the donation. Some see it as a way to honor another person. Others who have made the recommended annual Pentecostal Appeal contribution wish to give additional support to a particular hospitalier ministry. Whatever the reason, all are anxious to serve humanity with generous hearts.✠







# Kalaupapa

## The Colony on Molokai, Hawaii

by Sister Alicia Damien Lau, OSF, ChLJ, MMLJ, SMLJ of St. Elizabeth Convent

In the middle of the Pacific Ocean, you will find the Hawaiian Islands. The Polynesian people lived and worked among themselves, fishing the ocean, and growing their staple foods of taro and sweet potatoes. In 1778 Captain Cook discovered the islands and named them the Sandwich Islands. The arrival of the Europeans made a significant impact on exports and since the Hawaiians had no immunities to disease, they were vulnerable to infections and diseases. King Kamehameha V in 1864 noted that leprosy was rapidly spreading in the islands. By 1865, the Legislative Assembly of the Hawaiians Island passed “An Act to Prevent the Spread of Leprosy” approved by the king. Segregation was the only option, in a place where they could not escape. That place was Kalawao, 12 square miles, on the isolated Kalaupapa’s baron peninsula protruding from Molokai Island’s north shore. The site surrounded by water on three sides with the highest sea cliffs in the world on the fourth side is a natural “prison”. In 1873, Fr. Damien de Veuster, SSCC assisted in advocating for more supplies and helped to care for them. The number of leprosy patients grew to around 800 people. Mother Marianne arrived in 1883 to care for those with

leprosy. In 1888, due to the political, social change, and fear of leprosy, the Board of Health supported only one place for treatment, the settlement at Kalaupapa. They closed the Kaka’ako Receiving Station in November 1888 and asked Mother Marianne Cope, OSF to manage the girl’s home in Kalaupapa. The number of patients jumped to 1,200. Over the years, Kalawao and Kalaupapa became home to 8,000 patients with leprosy. In 1873 G. Hansen discovered it was a bacterium. The sulfone drug, finally arrived in Hawaii in the 1940s, however, the State of Hawaii did not abolish the isolation policy until 1969. People could leave if they wished, however, this was their home for years and many chose to live out their lives here. The National Park Service arrived in Kalaupapa in 1980. They assist in caring for the Aina (the land), many of the historic buildings, the graves, safe keeping of the artifacts and educating the public on the history of the people sent to Kalaupapa and Kalawao. Today, we have the remaining 8 former patients, ages 84 to 100. Their needs are simple; they all want to live life to the fullest here in Kalaupapa. While they live here, the Department of Health assists with caring for their homes, yard, medical/food needs, and whatever else they need. Taking one day

at a time, they enjoy being outdoors, visiting or talking with friends and staff, listening to talking books, or watching TV, and trying not to engage in political debates. We are here to assist the patients, whether it is going for a ride with them, escorting them for their ID/Driver’s license, or taking care of personal appointments. They are leaving behind their mana, legacy, memories of their friends, family and the kokua who have cared for them. Over the past ten years, the Hawaii Cadre of the Grand Priory of America has actively supported the Kalaupapa Care Home through grants for medical equipment, furniture and supplies as well as items for patient comfort totaling in excess of US\$60,000. Moreover, Cadre members have provided considerable volunteer support and have organized pilgrimages and related religious services. ✱

### Resources:

- [nps.gov/kala/index.htm](https://nps.gov/kala/index.htm)
- [nps.gov/articles/kalaupapa.html](https://nps.gov/articles/kalaupapa.html)
- [cnn.com/travel/kalaupapa-national-historical-park-hawaii/index.html](https://cnn.com/travel/kalaupapa-national-historical-park-hawaii/index.html)
- [leprosyhistory.org/geographical\\_region/site/hawaii](https://leprosyhistory.org/geographical_region/site/hawaii)
- [trentonmonitor.com/news/2023/dec/20/molokais-leprosy-settlements-the-ohana-of-two-catholic-saints-faces-historic-transition/](https://trentonmonitor.com/news/2023/dec/20/molokais-leprosy-settlements-the-ohana-of-two-catholic-saints-faces-historic-transition/)



# MEDICAL MISSION: UKRAINE

11 Days on the ground and a few kilometers from the zero-line, The Order of St. Lazarus delivers hope and solidarity.

On September 15th, 2024, the Grand Priory of America completed its second successful medical mission trip to Ukraine since the war started in February 2022. In collaboration with members of the Grand Priory in Canada (Paul Richards), the Humanitarian Grand Priory of Europe (Dirk Augustin and Matthias Keene) and the Priory of Belgium (Dirk Decoster), two concurrent missions were carried from September 3-15, 2024. Team members began arriving in Germany on 9/4 and 9/5 before starting the long journey to Ukraine.

The central team, led by Dirk Augustin and Paul Richards, left Frankfurt on 9/5 and drove to Ukraine via Poland to pick up our Belgium member before crossing over the border into Ukraine. From there they spent the next 5 days delivering medical equipment to Cherkasy, a town south of Kiev, before heading to Kiev to deliver tactical combat individual first aid kits (IFAK) to the Volunteer Hospitaller Brigade of Kiev.

The southern team, of which I was a member, also started from Germany on 9/5 and drove to a small village in Poland late that night, crossing over the border into Ukraine the following day. My initial team consisted of Sean O'Donnell and Brian Harlow (both now new postulants and both former military), before we added three more international members after arriving in Lviv, Ukraine. The air raid warnings started our first night in Lviv and continued every day until we left, but this is the daily life for everyone in Ukraine now. These new members came from Poland, Austria and the UK, and were all former military as well. In our two-vehicle convoy we made the long drive from Lviv to Vinnitsia, ending up in Zaporozhe, on the southern front, late the next day. This was our destination, and we added several more team members from one of the local military units that evening and the following day. Early the next morning, with our phones in airplane

mode and Bluetooth and WiFi disabled, our convoy made the challenging drive to the front and headed to a well-concealed bunker in a discreet location a couple of kilometers from the "zero line". There we met a large group of soldiers from this unit and proceeded to distribute the IFAKs that the GPA purchased, with our Lazarus Cross attached to each kit, and trained these soldiers on how to use the medical gear inside each kit. This was an amazing opportunity to help these soldiers, with ages ranging from 20-70, to learn more about how to save their own life as well as their comrade's life.

You may recall that last year we delivered over \$100,000 of rehabilitation equipment for amputees to a military hospital in central Ukraine, and many of these amputations were necessary because of missing or inadequate tourniquets when they were injured. The idea this year was to try and reduce this extremely high rate of amputations by providing the frontlines with the needed medical equipment to take of these injuries when they occur and reduce the need for prosthetics and rehab action equipment, hopefully enabling many of the wounded to return to a more normal life after the war.

Limb loss accounts for more than 50% of the casualties in this war, and the advanced combat tourniquets we brought should help reduce these devastating injuries. We spoke with many of the soldiers and their commander, and each one was extremely grateful for these supplies as this needless war grinds on.

We ended our visit to this bunker and these soldiers with quite a dramatic drone demonstration, and began our long trip back to Kiev where we would meet back up with our central team. We met many new friends on our visit to this bunker, and I look forward to continuing our much needed and appreciated support for these soldiers fighting to keep their country free.

On 9/10 we rendezvoused with our central team in Kiev, and shared stories of our trips with each other. That afternoon,

we had the privilege of visiting the Vatican Embassy (Apostolic Nunciature) in Kiev, and met with Msgr. Joseph Maramreddy, the Deputy Consul, to discuss possible future opportunities for support between the Order of St. Lazarus and the Nunciature. We also spoke with several representatives of other charitable groups and NGOs working in Ukraine about future collaborative efforts between the Order of St. Lazarus and these groups.

We departed Kiev on 9/12 to begin the long trip back to Germany, but first stopped at Bucha, outside Kiev, where in the beginning of this war atrocities committed by the Russians resulted in the deaths of over 500 civilians, including many women and children. Visiting the memorial that was erected in their memory brought a somber ending to this trip and reinforced our resolve in continuing our support of the innocent people of Ukraine just trying to enjoy what we enjoy every day – freedom and independence.

This was a complex and carefully planned medical mission trip, with me alone flying more than 11,000 air miles and over 3,750 driving miles in three different countries – Germany, Poland and Ukraine – and all in just 11 days. It involved the participation of two separate teams totaling 12 people from eight different countries – USA, UK, Canada, Germany, Belgium, Poland, Austria and Ukraine. It required the use of three vehicles with a "couple of necessary add-ons" along the way, and a lot of gas station stops for coffee and stretching! All this notwithstanding, it was worth every second of travel and every ounce of energy to get our medical equipment to those who need it and to make sure they are properly trained in how to use it, as there is unfortunately no doubt it won't be used. To see the smiles on the faces of these soldiers and civilians, and to shake their hands and give them embraces of friendship and solidarity, makes any risk and cost more than worth it. ✕









## Donations Aid St. Patrick's Cathedral Outreach to The City's Homeless



Dear St. Lazarus brothers and sisters, I hope you enjoy the summer with your families. The donations that we provided to St. Patrick's Cathedral have been used and allocated for the following purposes:

Help with monthly supplies for the Saint Patrick's Cathedral and Catholic Charities homeless outreach.

Funds have also been used towards the patroonship of Saint Patrick's Cathedral with City Relief.

City Relief trains Saint Patrick's volunteers. and provides resources to poor and homeless people in need who come to Saint Patrick's Cathedral.

They also hold an onsite pop event around Saint Patrick's Cathedral for the homeless.

City Relief will also provide *Bombas* socks, hygiene kits, and additional resources. ✨

*Submitted by Dame Michelle Bo Kay Kwong, DLJ, SMLJ for The Order*



On August 29th. the leadership of the Atlantic Commandery met in Ridgefield, Connecticut to discuss the work of the Commandery and the New York Cadre, to plan upcoming events, and manage its outreach and hospitaller work to charitable organizations and to potential new members. Pictured, Left to Right: Christopher St. Victor-de Pinho, KLJ; C. Doug Harvey, CLJ; Atlantic Commander Garrett R. Bowden, KLJ; Atlantic Vice Commander Michael D. Witter, CLJ; Jennifer St. Victor-de Pinho, DLJ; Gregory Mesniaeff, KLJ.



## Members in México: Charitable Works Proceeding

We are proud to report that our charitable work has been proceeding normally. For example, from the start of the year until last August 31st, the nuns in our clinics located in Morelia and Irapuato have made a total of 646 follow-up visits to patients of various illnesses -mostly dermatological, including a few cases of leprosy- and their families in the small towns surrounding each city. In addition, the dermatologists joining forces with us have given 1,568 low-cost consultations at the clinics and provided free medicines to patients on 1,163 occasions.

We have also donated 645 packages of food and 113 blankets (given out in January and February), and on two occasions, we have distributed medicines and vitamins donated to us by a charitable organization called "Direct Relief" (see [www.directrelief.org](http://www.directrelief.org)): once in June, for a value of approximately US \$2,500, and in August, for US \$24,500. In the first case, the products were produced by GSK Pharmaceutical and most recently by Pfizer.

Our nuns have continued to organize occasional talks on improving hygienic and nutritional habits for the benefit of patients and their families, as well as first communions and reunions at the end of Catholic masses on each Sunday and some religious holidays.

Regarding social events held in Mexico City, we may mention the conference given on June 24th by Dr. José Antonio Lozano, Dean of Universidad Panamericana, on the subject "The Challenges of the New Era", which attracted around 100 listeners and through which we collected funds and took the opportunity to inform the people attending about our Order and what we do in Mexico, the U.S and worldwide.

As some of you may remember, over the past few years we have taken advantage of the "Matching Grant" program of the GPA to give donations to "Unidos", which is a charitable organization that organizes activities for young people with disabilities and pairs each one of them with youngsters without disabilities who generously give their time and effort to participate in such activities. This year, "Unidos" organized their tenth yearly golf tournament to collect funds. As every year, around 150 players participated. ✱



H.E. The Chev. Guillermo D. Salas Vargas,  
KCLJ, CMLJ, MBA

**Almoner & Hospitaller  
Delegation of México**





H.E. The Chevalier Michael R. Milner,  
USPHS (Ret), DHSc, PA-C, KCLJ, OMLJ,  
SMLJ

**Grand Prioral Hospitalier,  
Grand Priory of America**

## Snapshots of Your Pentecostal Appeal at Work

**H**ello, Brothers and Sisters in Christ! Here are snapshots of some of the many projects we have funded in the past year through your Pentecostal Appeal Donations:

### **Georgia Transplant Foundation Initiative Update:**

Georgia Transplant Foundation (GTF) is making tremendous strides in expanding organ donation awareness and outreach efforts across rural areas of Georgia. Under the leadership of our Outreach Coordinator, Lynne White, we are actively reaching underserved communities that face significant challenges in accessing transplant education and care. These efforts have become crucial in areas with high rates of chronic illness, particularly in African American and rural communities where healthcare resources and awareness about organ donation are limited.

Lynne has been engaging with these communities several times a week, visiting local churches, dialysis centers, and community organizations to build trust and create lasting connections. Over the last eight months, Lynne has attended three health fairs in the Atlanta area, reached out to over 70 churches to set up educational seminars, and is working closely with influential community leaders. Currently, she is collaborating with individuals like Brenda Pace, Claudia Adrian, and Sheldon Williams to establish meetings with pastors at New Life Community Church, New Birth Missionary Baptist Church, and Berean Christian Churches. In addition, she has made strides in connecting with Lorrain Cohran-Johnson, the CEO of DeKalb County, and Alex Habersham, Chairman of the Central Georgia Coalition of Black Businesses. These efforts are helping GTF reach more people in need of vital transplant information.

Lynne has also attended 28 lobby days at Fresenius, US Renal, and DaVita centers, deepening GTF's presence in dialysis clinics and raising awareness among patients and healthcare professionals. This work is critical in addressing the racial disparity in kidney transplantation. Although more than 17,000 people in Georgia are on dialysis, only 3,000 are listed for a kidney transplant. This disparity is even more pronounced in African American communities, where chronic kidney disease rates are high, yet access to transplantation remains low. By forming relationships with rural healthcare providers, dialysis social workers, and faith-based leaders, GTF is working to close the gap in transplant registration and help more patients access life-saving care.

As a result of these outreach efforts, we've seen a notable increase in referrals to GTF's Financial Assistance Programs, which are designed to alleviate the financial burden of transplantation and improve health outcomes. Our programs help cover non-medical expenses like lodging and transportation—expenses that often prevent patients from seeking or completing transplant procedures.

Looking ahead, GTF is committed to further expanding our outreach across Georgia, strengthening partnerships with healthcare providers, and deepening our presence in rural and underserved areas. By focusing on education, financial support, and collaboration with local communities, we are making organ transplantation more accessible to every Georgian in need.

Thank you for your continued support. Together, we are making a lasting impact and enriching the lives of transplant patients and their families across the state.

### **Rising Star Outreach Leprosy Care Program in India**

To Our Friends at "The American Association of The Order of St. Lazarus",  
What another impactful year it has been! Strides have been made in each of our 3



program pillars that support our mission, and lives continue to be blessed and saved. This is in no small part thanks to the gracious and loving members of The Order of St. Lazarus! Thank you for all that you do and continue to do to be a voice for these forgotten individuals and their communities, as well as bringing light to this disease that still persists over the past many millennia.

Below are a sampling of some of the services and work that you helped make possible for these patients and their families during 2023 calendar year - helping save lives and offer health and healing.

- **Leprosy Screenings:** 11,947 screenings. These screenings take place in the colonies and their surrounding areas to help stop leprosy in its tracks and prevent new patients from suffering the severe debilitating effects of untreated leprosy.
- **Wound Care:** Our medical team provided 3,828 instances of treatment for wounds associated with leprosy (typically non-healing ulcers, common with the disease) to leprosy patients. These typically include cleaning of the wounds, ointments, and new wrappings, along with consultation from the doctor and nurses.
- **Physiotherapy:** 1232 instances of physiotherapy provided for patients to help with mobility and dexterity of limbs (or after loss of).
- **Anemia Prophylaxis Program:** 3486 doses of iron & other mineral and vitamin supplements given to students at our campus to help with combating anemia. Anemia is a known and common problem in all age groups across India, but especially among women and children.
- **Protective & Assistive Devices:** 529 items were made and/or provided to assist with healing, mobility, and protection. We also create support inserts, which can cradle existing ulcers, diminishing friction and pressure which exacerbates the ulcer and slows down healing. Other assistive devices such as grip-aides, wheelchairs, walking sticks, dark-glass sunglasses and regular glasses, and other items were also provided to meet patient needs.
- **Health Education:** 7,417 instances of people receiving specialized health education to improve their hygiene, protection from disease, instruction for wound care, etc.
- **Medical Check-Ups & Consultations:** 12,333 check-ups and consultations were given by our medical team to patients, students, and staff. These include general health exams for new, incoming students, to create any specialized treatment needed for them (such as to address malnutrition or other issues they may have which are sadly common coming from such poverty in the colonies).

Best regards and with many thanks, Tawna Fowler, and all of us at Rising Star Outreach

---

### Hawaii Cadre Support for Lahaina, Maui

Cadre Leader Steve Brock, KCLJ, reports that activities continue associated with relief and recovery for Lahaina after the wildfire last summer. Steve reported that travel and tourism was curtailed for many months and this severely affected the people living there through job loss and difficulty with housing and subsistence. All members of the Hawaii Cadre were heavily engaged with various Lahaina relief efforts. While no complete audit of support has been compiled, every member of the Hawaii Cadre was supportive through generous donations of food supplies and necessities. Steve's family alone donated 4 truckloads of goods and several thousand dollars to various charities and needy families there. Dr.

Shirley Tamoria, CLJ, deployed to Lahaina as a clinical health care provider thru the Hawaii Department of Health and was there over a month in the immediate aftermath working in a mobile clinic. Bishop Larry, Father Lane, Father William and Father Dario all developed support projects through their parishes for targeted needs including shipping 40 foot refrigerated containers of food and ice at least three times. Several clergy created educational programs in their parishes to raise money and collect specifically needed items for displaced residents. All the Hawaii Cadre clergy including Monseigneur Watanabe and Bishop Fitzgerald have gone to Lahaina multiple times this past year for pastoral support and ministry.

---

### Infant Welfare Center in the Holy City of Jerusalem

We received a recent email report from Tania Awwad the center director who provided a brief update on activities at the IWC since the start of 2024. With the war in Gaza that started in October 2023, the number of children being supported by the center has fluctuated. They average around 25-30 children each day in ages 3 months to 12 years. Due to the lack of tourism in the Holy City, the number of children served has declined from past years. The center still provides comprehensive daily child care, needed clinical services such as vaccines and checkups, specialized clinical services to detect conditions such as autism along with nutritional and mental health support. Due to the active fighting and inability of families to travel as freely as before the war began, the center has had to welcome numerous elderly neighbors into their center. The elderly citizens who are able have been tasked with helping provide care for the children and have been incorporated into the daily educational programming; they also prepare and serve nutritious meals for the little ones. The IWC has expanded their nutrition support to aid shut-in elderly living near the center. Using the elderly that have been trained in the center by nurses and social workers, the IWC staff have arranged for food delivery and "check in" support for those nearby elderly folks who are unable to come to the center on their own. They started last fall with 12 seniors, now over 50 are participating at least four times per week in their programing. This past summer, they hosted several "summer camps" for various aged children from 3 months to 12 years of age. The summer camp programs targeted the developmental needs of the children. For the first time, basic clinical first aid, CPR, emergency response planning and fire extinguisher training was taught to the older children in the 8-12 year old group to promote self-reliance, safety, and confidence to get through the tough challenges of life.

Tania asked us all to keep those involved with the Infant Welfare Center programs in our daily prayers. She said the things in Jerusalem are very difficult now and more challenging by the day. She knows that God will keep them safe and believes that God will spread peace to the area soon.

---

Let us all pause for a moment and ask God to protect all the children and those caught up in the fighting in the Holy Land and in other places around the world. We know that the children are our future. Protect them, Almighty Father, and keep them safe.✱

## THE USA AND LEPROSY RESEARCH



Dr. Jessica K. Fairley, CLJ, BCrLJ, MD

Associate Professor of Medicine,  
Global Health, and Epidemiology  
Emory University

Special to *The Order*

### Despite low numbers, the United States offers unique perspectives in the fight against leprosy

The United States has a long history with leprosy, or Hansen's disease (HD), that continues to the present day. While there is debate about whether the bacillus was first introduced to the Americas along with the arrival of Europeans and enslaved Africans 500 years ago or earlier during human migration from Asia 12,000 years ago,<sup>1</sup> there is no question that the last 150 years has seen significant attention and developments around HD in the United States (US).

Less than 30 years after the Kingdom of Hawai'i established the Kalaupapa leprosy colony on Moloka'i in 1866, the State of Louisiana established the Louisiana Leper Home in 1894 at an abandoned plantation along the Mississippi River in a similar attempt to isolate individuals with HD. Following the US Public Health Service's purchase of the property in 1920, individuals with HD were sent to Carville from across the country as part of a national forced isolation policy. While the negative legacy of this policy must be acknowledged, it is also true that many developments occurred at Carville that shaped our current approach and understanding of HD, in particular the discovery of dapsone precursors in the 1940s.<sup>2</sup>

More recently, US-based research has brought to light the armadillo's role in the epidemiology of HD in the US. Groundbreaking research done by Dr. Richard Truman and others shows the correlation of armadillo genotypes with local human infections,<sup>3,4</sup> a discovery that has led to the identification of nine-banded armadillos as reservoirs in other parts of the Americas.

What does the epidemiologic and clinical landscape of HD look like now in the United States? HD surveillance and clinical support are conducted by the National Hansen's Disease Program (NHDP), which is run by the Health Resources Service Administration of the Department of Health and Human Services. In 2023, 225 cases were reported to the NHDP, a 10-year high.<sup>5</sup> It is unclear whether the 2023 incidence reflects a rebound from 2020/2021, when cases went undiagnosed likely due to COVID-19, or if it represents a true upward trend. Either way, reports of autochthonous cases have brought more attention to a potential emerging infection in armadillo-inhabited regions of the US. In fact, a case report from Florida made it to lay press in 2023 due to its description of rising cases in the state in recent years, igniting fears of an HD "outbreak" in central Florida. While these fears were overblown, there is no doubt that non-immigrant cases have increased in recent years in the southeast from central Florida up through Georgia. This growth in the number of new cases has mirrored the migration of certain populations of the nine-banded armadillo from the western coast of the Gulf of Mexico into these regions.

As an HD physician practicing at a clinic in the southeast, I am concerned by these trends. Over the past 10 years, I have cared for a growing number of individuals who have no history of international travel to, or residence in, countries typically thought of as endemic for HD.

The current epidemiologic situation in the US makes it an ideal place to better understand environmental reservoirs and modes of transmission of the bacilli. The country appears to have minimal human-to-human transmission as evidenced by the fact that, anecdotally, household contacts rarely if ever get infected: At our Atlanta clinic, not one of our patient's household contacts have been diagnosed with HD in over



30 years. While the US has a clear alternative source of infection, the armadillo, the bacteria causing HD is the same as everywhere else in the world. Therefore, we have a golden opportunity to take these clinical and epidemiologic observations and describe, once and for all, the various ways that *Mycobacterium leprae* and *M. lepromatosis* are transmitted. Elucidating environmental and zoonotic transmission would not only benefit public health in the US, but would have implications globally, bringing us that much closer to our goals of zero transmission. ✖

*Dr. Fairley is an infectious disease specialist based in Atlanta, Georgia, a city in southeastern United States with a humid subtropical climate. She directs the government-funded Atlanta Hansen's Disease Clinic at the Emory Travel Well Center. You can learn more at [www.hrsa.gov/hansens-disease/ambulatory-clinics](http://www.hrsa.gov/hansens-disease/ambulatory-clinics)*

#### Addendum from The Grand Prioral Hospitaller:

Thanks to Dr. Jessica for this great update!! If members have any questions related to leprosy and its treatment and prevention, just "Ask the Experts" by dropping us an email with your inquiry at [Hospitaller@st-lazarus.us](mailto:Hospitaller@st-lazarus.us). Our Order of St. Lazarus Leprosy experts team will get the answers for you and share them with all the members of our Order through upcoming newsletters and our website.



H.E. The Chevalier Michael R. Milner,  
USPHS (Ret), DHSc, PA-C, KCLJ, OMLJ,  
SMLJ

#### FOOTNOTES

- <sup>1</sup> <https://doi.org/10.1155/2017/6491606>
- <sup>2</sup> Faget GH, Pogue RC, Johansen FA. Present status of diasone in the treatment of leprosy. Public Health Rep (1896). June 28 1946; 61:960-3.
- <sup>3</sup> <https://doi.org/10.1056/NEJMoa1010536>
- <sup>4</sup> <https://doi.org/10.3201/eid2112.150501>
- <sup>5</sup> See "United States Reported Hansen's disease Cases by Year, 2014-2023" at <https://www.hrsa.gov/hansens-disease>.



Join David Juliano and the Order of St. Lazarus

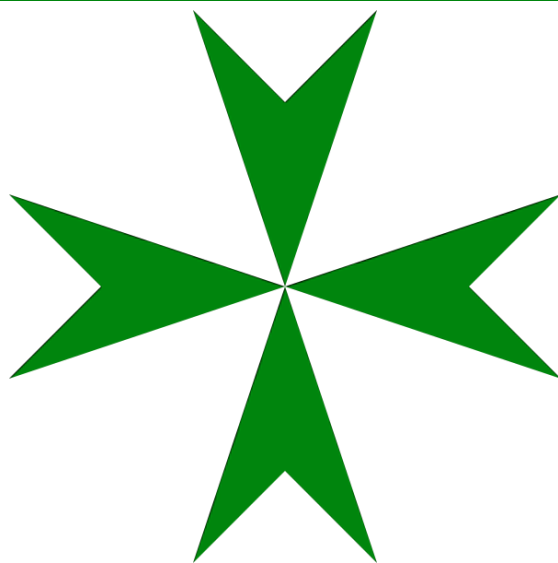
*Paris 2025*

June 10 - 16, 2025



Host:

David Juliano





# Itinerary



**June 10** – Depart on your overnight flight from the USA to Paris.



**June 11** – Arrive in Paris, where your guide will escort you to your bus for a panoramic tour of the city, including seeing the Seine, the Champs Elysees, Arc de Triomphe, with a view of the Eiffel Tower. Then, enjoy a relaxing, hour-long Seine river cruise and see Paris the way it was meant to be seen! Spend the rest of your first evening on your own in the city, and watch the Paris sunset from your hotel after a relaxing dinner. (D)



**June 12** – This morning, enjoy a tour of the Cathedral Basilica of St. Denis. Considered the first Gothic Church (built in 1144), it is the burial place of French royalty from the 10th through 18th centuries. Then, make your way to the Ecole Militaire Royal, a complex of buildings that house various military training facilities. It was founded in 1750 by King Louis XV and is currently an active military academy. It was classified as a national monument in 1990. Then, visit the Cloitre des Billettes, the only remaining medieval cloister in Paris. It takes its name from the former convent there, which housed the brothers of the Charite de Notre Dame called Billettes and later given the name Carmes (Carmelites). As you return to the city for a relaxing evening, catch a glimpse of the Gare Saint-Lazare train station. Enjoy dinner and overnight at your hotel. (B, D)

**June 13** – This morning, enjoy a day trip to the famed Versailles. When the château was built there, Versailles was a country village; today, it is a suburb of Paris, some 20 kilometers southwest of the French capital. The Court of Versailles was the center of political power in France from 1682, when Louis XIV moved from Paris, until the royal family was forced to return to the capital in October 1789 after the beginning of the French Revolution. Versailles is, therefore, famous not only as a building but as a symbol of the system of absolute monarchy of the Ancient Régime. Enjoy a tour of the palace, including the Trianon Palace (set over a single story flanked by a courtyard on one side and gardens on the other), and a visit to Marie Antoinette's estate. Afterward, return to your hotel for an evening on your own, including dinner and your overnight stay. (B, D)

**June 14** – Embark on a day trip to Boigny this morning. Following the expulsion of the Christian forces from the Holy Land, it's here that the Order of Saint Lazarus stationed its headquarters near Orléans in France. By the 15th century, the general management of the Order gravitated towards three centers: the main center at Boigny, with subservient houses extending through France, Central Europe, and Hungary; a southern Italian center at Capua assuming independent



responsibility for the holdings in the Kingdom of Sicily; and an English center at Burton Lazars assuming independent responsibility for holdings in England. King Henry VIII eventually abolished the English branch of the Order in 1544, though not with papal consent. The second half of the 16th century was to see the remaining two factions of the Order follow different courses in their subsequent history. Enjoy a short service together at the Chateau De La Commanderie, followed by a lunch at the event center in Boigny. Return to your hotel for dinner and your overnight stay. (B, L, D)

**June 15** – This morning, enjoy a service at the American Church In Paris. Then, take a trip to the famous catacombs, (built in the 14th century to store the exhumed bones from the overflowing Paris cemetery). Afterward, return to the city and enjoy an afternoon on your own in Paris, or enjoy an optional excursion to tour the Eiffel Tower! Relax into your final dinner and overnight at your hotel. (B, D)

**June 16** – Depart on your return flight to the USA with memories to last a lifetime!

**STARTING AT**  
**\$4,596\***  
**FROM TAMPA, FL**

**YOUR ALL-INCLUSIVE PRICE INCLUDES:**

Basic Tour & Guided Sightseeing

Round-trip International Airfare

Additional baggage & optional fees may apply; see fine print for details

Fuel Surcharges and Government Taxes

Subject to change

Admin. Fees, Entrance Fees, Hotel Gratuities

Program Fees, Meals as listed in the itinerary

Deluxe Motorcoaches, First-Class Hotels & much more!

\*A 3.5% surcharge will be added to all credit card transactions.





## PROGRAM CONDITIONS

### INCLUDED IN PRICE:

• Round-trip international airfare • Deluxe motorcoaches • 1st class hotels • Guided sightseeing • Entrance fees to sites visited (as listed in itinerary) • Meals as listed in the itinerary • Hotel gratuities • Program fees • Administrative Fee • Fuel surcharges \$600 • Government Taxes \$98 (Increases in government tax and fees are subject to change)

### NOT INCLUDED IN PRICE:

• Optional Travel Protection Program (see premium schedule) • Extensions and optional sightseeing as listed in the brochure • Miscellaneous fees such as individual transfers; passports, laundry, lunches, beverages at meals & baggage fees • Voluntary "Love Offering" for guide and driver • \$100 Document fee for Non-US/Canadian residents • Visa for non-US citizens • Required Vaccinations • Required medical testing before, during, and/or after travel

### ACCOMMODATIONS:

Price is per person based on double occupancy. When available, single rooms are often smaller than doubles. While EOT will try to match roommates, EOT cannot guarantee a roommate will be available. Roommates may be assigned as late as 30 days prior to departure and, if one is not available or you request a single room, the following charges apply: \$998 during the basic tour.

### PAYMENT INFORMATION:

A 3.5% surcharge will be added to all credit card transactions.

### PAYMENT SCHEDULE:

Payment	Amount	Due Date
Initial Deposit	\$300	Upon registration
Second Deposit	\$1,500	02/15/25
Full Deposit	\$1,800	Payment received between 02/16/25 - 03/26/25 must pay the full deposit amount and may be subject to late registration fees.
Final Payment	03/27/25. If paid after the due date, a late payment fee of \$100 will be assessed.	
Travel Protection Amount	The Travel Protection Plan premium will be due no later than 02/15/25 to departure to be in full effect. Travel protection premiums must be paid in addition to our deposits and in advance of the final payment for coverage to be in effect.	

### REGISTRATIONS RECEIVED after February 15, 2025:

We welcome registrations after 02/15/25. Registrations received between 02/16/25 - 03/12/25 will incur a fee starting at \$100 per person. Registrations received between 03/13/25 - 03/27/25 will incur a fee starting at \$200 per person. Registrations received between 03/28/25 - 04/11/25 will incur a fee starting at \$400 per person. Registrations received on 04/12/25 or later will incur an additional fee based on air availability. Additional fees will be advised upon registration.

### CANCELLATION FEES:

100% of Cancellation Fees are covered by the optional Travel Protection Program provided premium has been paid and reason for cancellation is coverable. Those who do not take travel protection should be aware of the following per-person cancellation penalties: From day of registration to 105 days prior to departure, you will be charged the \$100 non-refundable cancellation fee plus any airline fees. Additionally, thereafter, you will be charged any airline penalties and a single room supplement if your cancellation forces your roommate into a single plus the following per-person charges: 104-60 days = \$400; 59-45 days = \$600; 44-31 days = 40% of total cost; 30 days to day of departure = 100% of total cost. Submit cancellation in writing. On or after day of departure, there will be no refund for any services not used.

## STATEMENTS OF RESPONSIBILITY

EOT does not accept responsibility for losses or additional expenses due to delay or changes in air schedules, hotel overbookings, other hotel related problems or causes, and/or travel supplier cancellations or postponements. Travel suppliers include all tour operators, cruise lines, airlines, hotels, bus companies, entertainment venues, and any other travel supplier used to operate the tour. All such losses or expenses will be the responsibility of the passenger. EOT reserves the right to make adjustments to the itinerary as deemed desirable by EOT, and EOT reserves the right to cancel any tour prior to departure. If a tour is canceled beyond the control of EOT, EOT will provide a refund or a future travel credit to be used two years from the date of issuance for the value of all funds paid by the passenger less nonrefundable travel supplier prepaid deposits, travel supplier change fees, nonrefundable travel protection premiums, and a \$150 administration fee.

### FIT TO TRAVEL STATEMENT:

Passengers registering for the tour accept the responsibility for being in good health and able to walk and travel on the tour. Because many of the sites are not accessible to the physically challenged and space limitations on tour buses, wheelchairs and scooters cannot be accommodated. Those needing oxygen or other ambulatory assistance will find the tour extremely limiting in their experiences. Persons using C-pap machines requiring distilled water will need to inform us ahead of time, so we can work with local operators to prepare as it is not always available. EOT reserves the right to refuse or revoke travel to anyone who is, in the sole judgment of EOT, incapable of group travel without causing undue demands upon the staff or other tour participants. Accessible rooms/cabins are limited and subject to confirmation after receiving the passenger's written request. If you have questions, please see [eo.travel/fit-to-travel-statement](http://eo.travel/fit-to-travel-statement) or contact Educational Opportunities Tours Inc. for more details.

### PASSPORT INFORMATION:

Passport information must be submitted to our office no later than 02/15/25. Failure to provide your passport information to our office by this date may result in change fees or denial of travel. Discrepancies in information may result in change fees, delays in receiving travel documents for your trip, or denial of travel. Any fees incurred due to discrepancies are the responsibility of the passenger.

## Travel Protection Plan - Premium Rates - For a full description of the plan, go to: [www.tripmate.com/wpF427E](http://www.tripmate.com/wpF427E)

Trip Cost	Plan Cost	Trip Cost	Plan Cost	Trip Cost	Plan Cost
\$0 - \$1000	\$99	\$3501-\$4000	\$399	\$6501-\$7000	\$699
\$1001-\$1500	\$149	\$4001-\$4500	\$449	\$7001-\$8000	\$799
\$1501-\$2000	\$199	\$4501-\$5000	\$499	\$8001-\$9000	\$899
\$2001-\$2500	\$249	\$5001-\$5500	\$549	\$9001-\$10000	\$999
\$2501-\$3000	\$299	\$5501-\$6000	\$599		
\$3001-\$3500	\$349	\$6001-\$6500	\$649		

### Schedule of Coverages

Part A *	Maximum Benefit
Trip Cancellation . . . . .	Trip Cost

### Part B

Trip Interruption. . . . .	Trip Cost
Missed Connection . . . . .	\$500
Travel Delay (Up to 10 days & up to \$150 Per Day)	\$1,500

### Medical Expense / Emergency Evacuation

Accident and Sickness Medical Expense . . . . .	\$25,000
Emergency Evacuation and Repatriation . . . . .	\$50,000

Accidental Death & Dismemberment. . . . .	\$25,000
Baggage and Personal Effects . . . . .	\$1,000
Baggage Delay . . . . .	\$200

### PRICE INCREASES:

All prices quoted in this brochure are subject to change prior to payment in full due to currency fluctuations, fuel surcharge increases, government taxes and fees increases or unforeseen circumstances. In addition, you may be subject to a price increase after payment in full has been received due to potential government imposed taxes and fees.

### AIRLINE ROUTES AND TICKETS:

In order to keep prices low, EOT does not guarantee the most direct routing to your final destination. Once issued, airline tickets cannot be changed or refunded thereafter. Air transportation to/from your destination will be economy class on IATA and ARC carriers utilizing APEX or SUPER APEX non-refundable, non-amendable tickets for groups of 10 or more flying together on entire itinerary. If you choose to depart from a different city than your group or traveling companion, or deviate your flight and/or trip plans, and/or you are taking a pre or post tour, you may fly on a different scheduled flight(s) than the rest of your group. If you make your own air arrangements, you are responsible for booking all needed flights for your travel unless specified otherwise. Contact guest services for further details.

### FLIGHT TIMES AND SEATING:

All flights are subject to change by the airlines without advance notice. EOT is not responsible for such changes or delays and does not reimburse expenses resulting from such delays. If you are making your own flight arrangements to the departure city, we recommend you purchase a ticket that can be exchanged without large penalties. There is no advance seat selection for groups on most airlines. Early check-in is necessary to secure seats with travel companions and those with special needs. Due to security measures taken at airports, it is advisable to arrive at the airport three hours prior to departure time. Seating is solely under the control of the airlines.

### ADDITIONAL AIRLINE FEES:

You will likely incur additional airline checked baggage fees that are not included in the price of the tour. These fees vary by airline and are at the airline's discretion on each segment of the flight itinerary. Additionally, you may incur optional fees (food, excess baggage, overweight baggage, items of personal nature, etc.) as well. For more information, visit [eo.travel/travel-info/airline-fees](http://eo.travel/travel-info/airline-fees).

### ON OWN DEVIATIONS:

On Own Deviations from the standard tour program must be submitted in writing and are subject to additional airline fees, if applicable. Transfers for passengers who deviate are not included.

### ITINERARY CHANGES:

Every effort has been made to ensure the accuracy of this brochure. While EOT will make every effort to ensure you will see all sites listed in this brochure, the availability of sites, order of sites and/or days and number of days may be altered to accommodate changes in airline, hotel schedules, and local conditions. No changes to the itinerary are effective unless approved in writing and signed by an authorized officer of the tour operator. Except as stated herein, no other person is authorized to cancel, modify or vary the tour arrangements or to make any representation of warranty concerning the tour.

Due to airline schedules, some participants may receive one or two extra leisure days at a nominal per day charge and some extensions may not be available on all departure dates. If itinerary changes necessitate extra overnights, you will be charged \$125 per night; single rooms \$175 per night. Meals for extra nights are not included.

### VALIDITY DATE:

This brochure is valid until 07/15/24. If validity date has passed, current brochures may be found at [www.eo.travel](http://www.eo.travel). Registrations will still be accepted after the validity date.

### RELEASE INFORMATION:

Payment of deposit indicates permission for EOT or its agents to record the registrant's participation and appearance on video tape, audio tape, film, photograph, or any other medium and to use the registrant's name, likeness, voice, comments, submitted documentation, written papers, and/or biographical material without restrictions or limitation for any advertising, marketing, publicity, educational or promotional purpose which EOT or its agents deem appropriate, unless the registrant or guardian otherwise notifies EOT in writing prior to departure.

Enrollment in, payment of deposit and/or acceptance of final documents, vouchers, or tickets shall be deemed to be consent to the Passenger Agreement and Program Conditions of the brochure. Prices are based on tariffs in effect as of January 1 of the previous year and are subject to adjustment without notice in the event of any change or currency fluctuation.

Except where otherwise stated, EOT acts only as agent for the relevant supplier in securing hotels, transportation and other travel services and in no event shall EOT be liable for failure by any such supplier to render any transportation, lodging or other travel service to be provided on the tour. **The passenger agrees that EOT assumes no liability for injury, death, damage, loss, theft, accident, delay, any lost or damaged luggage, or irregularity which may occur by reason of any negligent or wilful act or omission of any suppliers of service.**

EOT does not own or operate any of the suppliers of services to your tour. Similarly without limiting the foregoing, passenger agrees to hold EOT harmless for any defect in any vehicle, plane, boat, bus, car, van or other vehicle, act of war or insurrection, terrorist activity, revolt or other civil uprising, military action, strikes or labor unrest or any Act of God or for any other act of any third party. Florida law will be applicable to any dispute which arises out of or concerns this brochure or your tour. Any and all litigation must be brought only in and for courts in Polk County, Florida to the exclusion of litigation anywhere else in the world. Educational Opportunities Tours is the tour operator and is solely responsible for the travel program. Educational Opportunities Tours is registered with the State of Florida as a Seller of Travel. Registration No. ST24130. CST2027682-40.

### Additional Cancellation Protection

When You purchase this Travel Protection Plan at or before the final payment due date for Your Trip, you also receive the Educational Opportunities Tours Pre-Departure Cancellation Waiver Benefit that allows you to cancel your Educational Opportunities Tours travel arrangements up to the day of departure for any reason (excludes no shows and those not permitted boarding). With this Educational Opportunities Tours Cancellation Waiver, your non-refundable land cancellation penalties will be refunded in Educational Opportunities Tours travel certificates. Certain travel programs are not eligible for this benefit, such as cruise and land programs listed and detailed on the Educational Opportunities website ([www.eo.travel](http://www.eo.travel)). **Premiums must be paid in addition to initial or second deposit prior to the final payment for coverage to be in effect. Part A** -Travel Arrangement Benefits are provided by Educational Opportunities Tours. **Part B** - Travel Protection Benefits are provided by United States Fire Insurance Co. \*For New York Residents Only: Part A Benefits are travel arrangement benefits underwritten by United States Insurance Company.

### Conditions and Limitations

This is a brief description of the plan available for all Travel Protection sales for Trips departing January 1, 2013 and after. Certain exclusions and limitations apply and are detailed in the Certificate of Coverage. For example, coverage does not apply to: any Sickness or condition of you, a Traveling Companion or a Family Member traveling with you that existed during the 60 days prior to the effective date of the coverages (The Pre-Existing Condition Exclusion is waived if payment for this plan is received by Educational Opportunities Tours, Inc. at or before the final payment due date for Your Trip or 105 days before departure date, whichever occurs first.), suicide, normal pregnancy, war or any act of war. Other Covered Reasons, as defined, includes the following events or their consequences: Cancellation or Interruption of your Trip due to: Inclement Weather, unannounced Strike, mechanical breakdown that causes complete cessation of services of Your Common Carrier for at least 12 consecutive hours; a documented traffic accident while en route to departure; being hijacked or quarantined; jury duty; destruction of your home or destination by fire, flood, burglary or natural disaster; being called to the emergency service of government to provide aid or relief in the event of a natural disaster; a documented theft of passports or visas; a transfer of employment of 250 miles or more; or Revocation of military leave. For further information ask for the Certificate of Coverage which fully details the coverages, provisions, limitations and exclusions of the plan offered and is available to you, upon request, at any time prior to your purchase of the plan. The Travel Protection Plan is only available for citizens or residents of the United States of America. **This plan is underwritten by:** United States Fire Insurance Company, Eatontown, NJ. Benefits are administered by: Trip Mate, Inc., 9225 Ward Parkway, Suite 200, Kansas City, MO, 64114, 1-800-888-7292 (\*in CA, dba Trip Mate Insurance Agency).

**LAZARUS**

